



CANTER Launch Update

June '23

Claire Shand

Who is **canter**

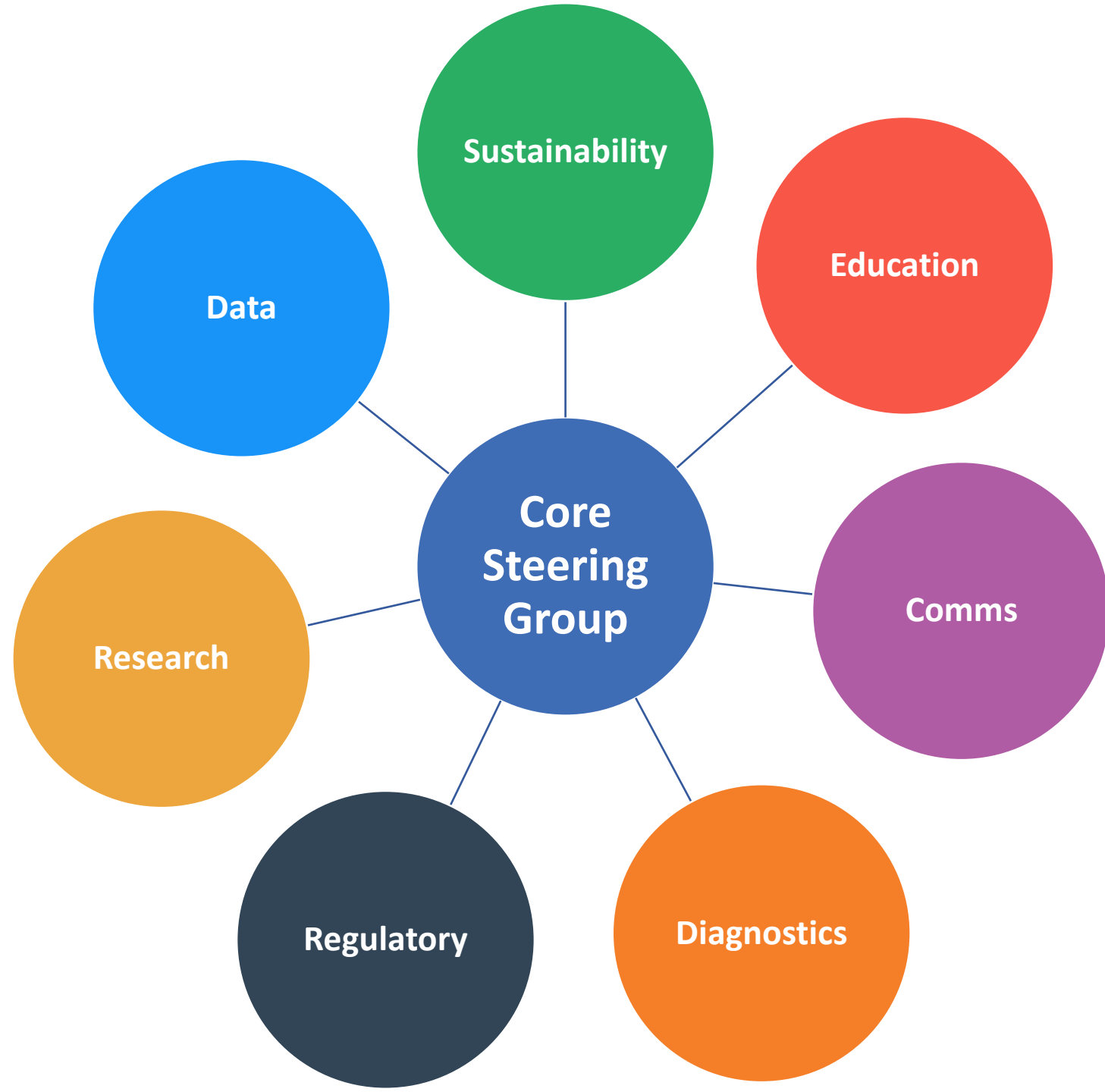


- A new voluntary pan-industry group
- Works in the interest of the UK equine community





organisational STRUCTURE





Publish best practice guidelines for prescribers



Publish faecal egg count guidance

Priority activities



Identify research gaps and funders



Develop a comms strategy



canterforhorses.org.uk

Focus on developing **the CANTER website** to establish the group.

- Updates on group activity
- Information on resistance
- Resources for prescribers, horse owners and media



CANTER

Controlling ANTiparasitic-resistance in Equines Responsibly

News About Resistance Feedback



GET THE LATEST

CANTER News



Piggy March CANTERS to support new campaign

Posted on 05/03/2023

at the National Equine Show A new pan-industry group, the first of its kind worldwide, has been form...



Assess Your Horse's Parasite Risk Profile & Win!

Posted on 26/02/2023

A broad range of risk factors influence your horse's susceptibility to parasite infection. The...



Wormer Resistance at The National Equine Show

Posted on 18/02/2023

What will we do when the wormers don't work anymore? This is the topic of discussion we'...

the



call to action!



Factors influencing a horse's parasite risk profile



Clinical History



Number of Horses



Environment



canter



Age Profile



Test Results



Risk Profile

www.canterforhorses.org.uk



Assessing Your Horse's Parasite Risk Profile

A range of factors influence a horse's parasite risk profile; remember them using the CANTER acronym and use this tool to discuss with your prescriber.



Risk Factor	LOW	MEDIUM	HIGH
C Clinical History	No history of worm associated (gut) disease	Some history of worm associated (gut) disease and/or coexisting disease such as PPID	Clear indication of worm associated (gut) disease in multiple cases plus coexisting disease such as PPID
A Age Profile	5-15 years, no youngstock	5 years-geriatric, no youngstock	1*-5 years, geriatric horses with coexisting disease
N Number of Horses	Low stocking density >2 acres per horse	Medium stocking density 1-2 acres per horse	High stocking density <1 acre per horse
T Test Results	Individual: repeated low worm egg count, tapeworm & small redworm antibody results Herd: low for worm egg count, tapeworm & small redworm antibody results	Individual: low-moderate worm egg count, tapeworm & small redworm antibody results Herd: low-moderate for worm egg count, tapeworm & small redworm antibody results	Individual: high worm egg count, tapeworm & small redworm antibody results Herd: high for worm egg count, tapeworm & small redworm antibody results Wormer resistance identified on property by worm egg count reduction testing
E Environment	Closed herd Poo-picked more than once a week Quarantine procedures in place	Occasional newcomers Poo picked less than once a week Quarantine procedures inconsistent	Frequent movements in and out of herd Not poo picked or picked infrequently No quarantine procedures
R Risk Profile	Calculate risk based on number of features that apply in each category; the more that apply in category low, the lower the risk, the more that apply in category high, the higher the risk of parasite infection and disease occurring.		

*Note: speak to your prescriber about the approach to parasite control in foals

➤ visit www.canterforhorses.org.uk for more information





What will we do when the wormers stop working?

4th March '23

THE NATIONAL
EQUINE
SHOW
4-5 MARCH 2023, NEC



Campaign Amplification through CANTER members

- 10,500 flyers distributed on event and through core steering group organisations



**CANTER aims
to tackle
resistance
in equine
parasite
treatments**



Campaign Amplification through CANTER members | Social Media

Over the launch period **42 posts** were produced across **6 collaborating organisations**. These posts achieved **46,485** impressions An engagement rate of **1065.5** A total reach of **51,820**

 **The British Horse Society**
22 Mar · 🌐

📣 We're pleased to announce the launch of CANTER – a new working group dedicated to Controlling ANTiparasitic resistance in Equines Responsibly!

🐾 CANTER brings together a team of experts from across the equestrian industry to tackle one of the biggest challenges facing horse owners today – resistance in horse wormers.

🏆 The first step is understanding your horses risk level. Use the CANTER risk assessment tool to help manage parasites in your horses and be in with a chance of winning a £100 Love2Shop voucher. Visit www.canterforhorses.org.uk to learn more.

#WelfareWednesday #HereToHelp



 **Veterinary Medicines Directorate**
Follow
4 Mar · 🌐

Claire Stratford, Claire Shand & Claire Williams will be on the Skills Stage at @NationalEquineShow today at 3:20pm to introduce the new pan-industry group #CANTER. To find out more visit www.canterforhorses.org.uk



 **Westgate Labs**
15 Mar · 🌐

🔬 Responsible horse owners test before treating for parasites so they can monitor their horse's health, but have you checked your horse's parasite risk profile yet? Are they LOW, MEDIUM or HIGH? Complete the CANTER Parasite Risk Profile to find out 📄 <https://bit.ly/canter-risk>

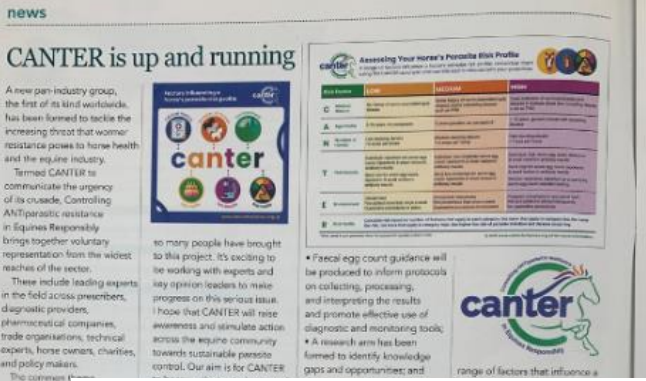
Let us know your horse's results in the comments!

🐾 #piggyback #mirihackett #annabridges

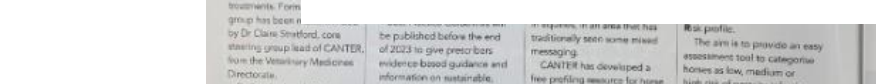




HORSE&HOUND



OvertheCounter


[Home](#) / [News](#)

‘Act now, before it’s too late’: Piggy March backs call to horse owners on deadly resistance

Eleanor Jones
15 March, 2023 12:20



Credit: Benjamin Clark Photography

H&H reported on the group, the first of its kind, which aims to tackle the increasing threat that wormer resistance poses, to equine health and the equestrian industry. Piggy, with coach Miri Hackett and international endurance rider Anna Bridges, joined CANTER representatives for the launch, at the National Equine Show on 4 March.

“CANTER brings together voluntary representation from the widest reaches of the sector,” a spokesman for the group said. “These include leading experts in the field across prescribers, diagnostic providers, pharmaceutical companies, trade organisations, technical experts, horse owners, charities, and policymakers. All recognise the critical consequences of antiparasitic resistance and the need for coordinated action to slow the development of resistance and maintain efficacy of our limited treatments.”

Claire Stratford of the Government’s Veterinary Medicines Directorate, spearheaded the formation of the group.

Advertisement

fiverr. x BUKAYO SAIKA

Go for your *goals*, no matter what.

[Join us](#)

fiverr. x BUKAYO SAIKA

Go for your *goals*, no matter what.

[Join us](#)

loved medal-winner and other things the horse world is talking about

Advertisement

SQUARESPACE

Control every *design detail* until your website is customer-ready.

[START SELLING NOW](#)

CAMDEZ FURNITURE



Media Coverage

HorseANDRider

HOME THE MAGAZINE EXPERT ADVICE

DON'T
LET FLIES
RUIN
YOUR
SUMMER!



CARR & DAY & MARTIN
EST. 1901



LET FLIES
RUIN
YOUR
SUMMER!



NEWS > NEWS

NEWS

BEHIND THE
SCENES

BLOGS AND
COLUMNS

MOST READ
ARTICLES



WHAT CORONAVIRUS
COULD MEAN FOR
YOUR HORSE



7 TELL-TALE SIGNS
YOU'RE A 'HORSEY
PERSON'

PIGGY MARCH SUPPORTS NEW WORMER CAMPAIGN

POSTED IN NEWS



Launch of CANTER programme aims to combat wormer resistance in the UK horse population

Top international event rider Piggy March has given her support to a new worming initiative launched at the National Equine Show on 4 March 2023. CANTER (Controlling ANTiparasitic resistance in Equines Responsibly) was formed by Dr Claire Stratford with the aim of creating a consistent approach to parasite control among horse owners.

Taking part in CANTER are voluntary representatives from the research sector – which includes prescribers, pharmaceutical companies and technical experts – and horse owners. Everyone involved recognises the critical consequences of wormer resistance developing in the various parasitic organisms and the need for this to be slowed through co-ordinated action if current treatments are to remain effective.

There are many misconceptions surrounding worming and, with that in mind, CANTER aims to be

YOUR
HORSE

Search



Follow Us

About Us

Subscribe

Newsletter

Home | News | Features | Fit Not Fat | Riding & Training | Horse Care | Gear | Hack 1000 Miles | Your Horse Magazine | Competitions | Books

Advertisement



Beautiful
Comfortable
Practical...
Perfect!

ARENA
SADDLES
Perfect in any Arena

9 March 2023

Piggy March supports new group aiming to tackle wormer resistance – plus free risk analysis tool



Eventer Piggy March supported a new campaign to combat wormer resistance in horses at the National Equine Show on 4 March.

CANTER is a new, non-industry group – the first of its kind worldwide – and has been formed to tackle the

Advertisement



Beautiful
Comfortable
Practical...
Perfect!

ARENA
SADDLES
Perfect in any Arena

You may also like...



20 March 2023

Spring has sprung, but Harry the
Cleveland Bay has some



CANTER - a coordinated approach for the equestrian community to combat wormer resistance

The TBA is proud to support CANTER (Controlling Antiparasitic Resistance in Equines Responsibly) as a member of the Core Steering Group and attended the recent launch at the National Equine Forum on March 2.

The Parasite Risk Table will be an excellent tool for stud managers and their vets to support with categorising their adult horses as low, medium or high risk of parasite infection and disease and then in taking the appropriate action. Further information is available at canterforhorses.org.uk.

The TBA is hosting a Worm Workshop event on Tuesday, August 22 at Askham Bryan College in York, which is free to TBA members and Access subscribers. Places can be booked through the events page on the TBA website.



Risk Factor	LOW	MEDIUM	HIGH
C Clinical history	No history of worm associated (gut) disease	Some history of worm associated (gut) disease and/or coexisting disease such as PPID	Clear indication of worm associated (gut) disease in multiple cases plus coexisting disease such as PPID
A Age Profile	5-15 years, no youngstock	5 years-geriatric, no youngstock	1'-5 years, geriatric horses with coexisting disease
N Number of Horses	Low stocking density >2 acres per horse	Medium stocking density 1-2 acres per horse	High stocking density <1 acre per horse
T Test Results	Individual: repeated low worm egg count, tapeworm & small redworm antibody results Herd: low for worm egg count, tapeworm & small redworm antibody results	Individual: low-moderate worm egg count, tapeworm & small redworm antibody results Herd: low-moderate for worm egg count, tapeworm & small redworm antibody results	Individual: high worm egg count, tapeworm & small redworm antibody results Herd: high for worm egg count, tapeworm & small redworm antibody results Wormer resistance identified on property by worm egg count reduction testing
E Environment	Closed herd Poo-picked more than once a week Quarantine procedures in place	Occasional newcomers Poo picked less than once a week Quarantine procedures inconsistent	Frequent movements in and out of herd Not poo picked or picked infrequently No quarantine procedures
R Risk Profile	Calculate risk based on number of features that apply in each category; the more that apply in category low, the lower the risk, the more that apply in category high, the higher the risk of parasite infection and disease occurring.		

*Note: speak to your prescriber about the approach to parasite control in stable

visit www.canterforhorses.org.uk for more information

ETN (Equestrian Trade News) Newsletter
Regular updates from your business sector..

[View this email in your browser](#)



The Voice of the Equestrian Industry

Share Tweet Forward Share



CAMPAIGN TO PROVIDE "SINGLE SOURCE OF RUTH" ON WORMING



15th March, 2023

Experts collaborate to tackle increasing threat to the equine industry. [read more](#)



CANTER: a pan industry group that will promote sustainable control of equine parasites

Parasitic helminths (worms) are common pathogens of equids across the world. In some cases, heavy infections with these parasites can lead to severe disease. Resistance to the currently available anthelmintics (wormers) is a major issue, particularly in two key pathogens: the cyathostomins (small redworms) and *Parascaris equorum* (roundworm). Drug resistance in these worms has been demonstrated to all classes of anthelmintic currently available and, in some cases, multi-class resistance has been reported (Nielsen, 2022).

It would seem that no new equine anthelmintics are coming to market, leaving a situation where ever-increasing levels of multi-drug resistance will limit effective parasite control. It is therefore essential that steps be taken to reduce the further spread of anthelmintic resistance.

Central to mitigating the impact of resistance, is the effective dissemination and implementation of evidence-based approaches to parasite control. These focus on moving the equine sector away from interval treatment-based control programmes, where horses are treated regularly with wormers regardless of infection status and with no consideration of the resident worm population's drug sensitivity, to approaches which exploit knowledge of parasite epidemiology to break transmission cycles and employ diagnostics to identify worms present and levels of infection within, or excreted by, individuals.

Challenges in implementing effective evidence-based parasite control in the equine sector

Over the years, there has been a wide range of

sources for parasite control advice. Throughout the 1980s and 1990s, the interval treatment dogma prevailed, largely led by marketing campaigns from pharmaceutical companies and based on epidemiological studies undertaken in the 1960s. These methods of control are straightforward to apply, with all horses dosed at intervals extrapolated from trials performed when each anthelmintic product was first registered. Since the initial reports of benzimidazole resistance (Drudge and Lyons, 1965), parasitologists have advised caution when using interval treatments because these generate high selection pressure for resistance. Gradually, these concerns led to a change in control recommendations, with strategies developed to reduce treatment frequency by removing pre-parasitic stages from paddocks through regular dung removal (Herd, 1986) and using faecal egg count tests to target treatments based on worm egg shedding (Uhlinger, 1993).

It is important to assess levels of strongyle egg excretion in individuals as gastrointestinal worm distributions within populations are not even and, usually, relatively few horses excrete the bulk of contamination onto pasture. This pattern (Figure 1), the negative binomial distribution, means that most (>80%) eggs put onto pasture are shed by a relatively small proportion (<20%) of the population (Relf et al, 2013; Nielsen et al. 2018). By using faecal egg count tests to guide treatments to only those horses excreting above a selected faecal egg count threshold (usually, 200 eggs per gram of dung, substantial reductions in anthelmintic treatment frequency can be achieved.

In addition to faecal egg count-led treatments, infection in the environment can be reduced by removing dung ('poo picking') at least

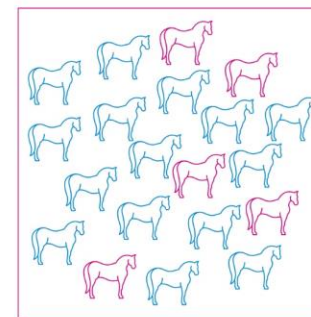


Figure 1. Schematic representation of gastrointestinal helminth distribution in managed horse populations, whereby a small proportion of individuals (highlighted in pink) shed the majority of the burden onto pasture. The horses highlighted in blue contribute to <20% of pasture contamination.

once a week. This is because strongyle eggs in dung take a certain time to hatch, releasing larvae, which then go through two 'moult' stages before they move onto pasture as infective larvae (Figure 2). In optimal conditions in the UK (when it is warm and wet in summer), this takes 1-2 weeks (Ramsey et al, 2004).

Research studies have demonstrated that removing dung from paddocks at least once a week can have a significant effect on pasture contamination with larvae (Herd, 1986), or on subsequent faecal egg count levels in equids that graze paddocks from which dung is removed (Corbett et al, 2014). By employing dung removal and diagnostic tests to indicate which horses require treatment, substantial reductions in anthelmintic use can be attained to



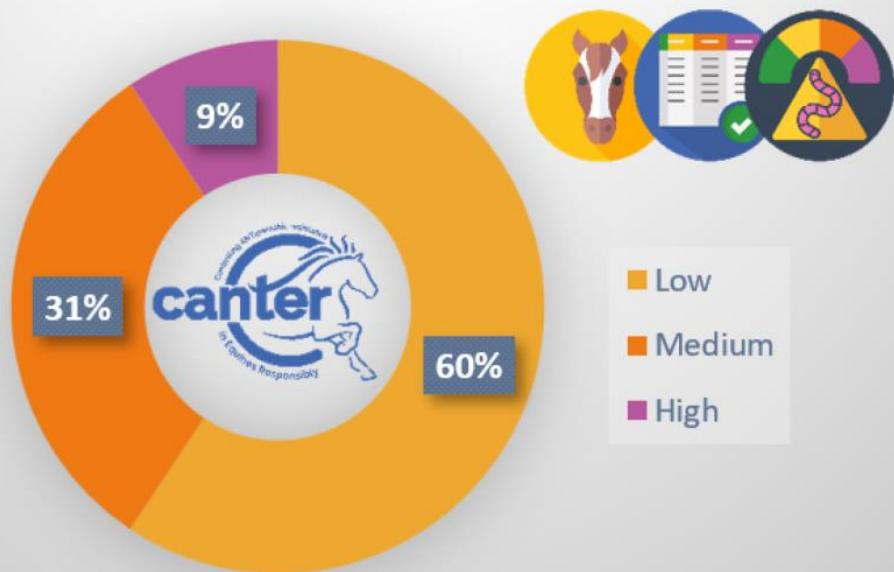
Data Capture

150 filled in the Risk Profile

Survey Shows More than 40% of Horses at Moderate to High Risk of Parasite Infection



CANTER Parasite Risk Profile



Enter the competition

To celebrate the launch of CANTER and encourage you to assess your horse's parasite risk profile we've £100 of Love2Shop vouchers up for grabs! Simply complete the form below including your risk profile assessment before 2nd May 2023 and we'll pop you in the prize draw. Good luck!



Assess Your Parasite Risk



mailchimp



Next Steps

- Best Practice Guidelines & Faecal Egg Count Guidance published before the end of 2023
- Work ongoing to identify research gaps and potential funders
- Communication strategy in development

Find out more at www.canterforhorses.org.uk

